

vCare Example Configuration Guide

bizhub PRESS C1070, C1070P, C1060

bizhub PRO C1060L

**AccurioPress C6100, C6085, C2060, C2070, C2070P,
C3070, C3080, C3080P**

AccurioPrint C2060L, C3070L

bizhub  **care™**



Table of Contents

1: Table of Contents	2
2: Requirements/Contact information	3
vCare Requirements.....	3
Network Requirements.....	3
vCare Technical Support Contact Information.....	3
3: Operation Panel Overview	4
4: Standard Admin. Mode Settings	5
Administrator Mode Configuration.....	5
Accessing Administrator Mode.....	5
Configuring Date/Time Settings.....	5
Configuring Power Save Setting.....	5
Accessing Machine NIC TCP/IP Settings.....	6
5: Service Mode Configuration	7
Accessing Service Mode.....	7
Setup Date Business Setting.....	8
Software Dipswitch Settings & I/O Check.....	9
5-A: HTTP Configuration	10
Administrator Mode Settings.....	10
HTTP Communication Settings.....	10
Configuring CS Remote Care.....	11
Accessing CS Remote Care.....	11
CS Remote Care Basic Settings.....	12
CS Remote Care Date/Time Setting.....	13
Heart Beat Setting.....	14
Periodical Transmission Setting.....	14
Fixed Date/Time Setting.....	15
Collecting Data Setting.....	15
Connecting the unit to the vCare System.....	16
Alternate CS Remote Care Settings configuration option.....	17
5-B: 1-Way E-Mail Configuration	18
Administrator Mode Settings.....	18
E-Mail Initial Setting.....	18, 19, 20, 21
Configuring CS Remote Care.....	22
Accessing CS Remote Care.....	22
CS Remote Care Basic Settings.....	23
CS Remote Care Date/Time Setting.....	24
Periodical Transmission Setting.....	25
Fixed Date/Time Setting.....	26
Collecting Data Setting.....	26
Connecting the unit to the vCare System.....	27
Alternate CS Remote Care Settings configuration option.....	28, 39, 30, 31, 32
6: Troubleshooting	33
Observing the SMTP Log.....	33
Saving the Communication Log on to a USB Storage Device.....	34
Printing a vCare Communication Log.....	35

This is an example vCare configuration and connection guide.

The manual entries used in this guide are not included as they would be entered during the configuration process.

vCare Requirements:

Device Registration: The device must be registered to the vCare System for HTTP or 1-Way e-mail communication protocol.

Firmware: This model does not have a minimum requirement for firmware. The recommendation is to be sure the unit is flashed with the latest firmware level available.

Network Requirements:

HTTP Communication Protocol: For direct communication with the vCare System from the engine, port 80 or 8080 must be open with all rules and permissions allowing Internet access for the machine. If the unit needs to communicate to a Proxy Server on the network, the technician will need to be provided this information including server address, port number and any required Authentication information for configuration.

SMTP Communication Protocol: For direct communication with the vCare System from the engine, port 25 or 2525 must be open with all rules and permissions allowing communication out of the network for the machine. If the unit needs to communicate to a customer's mail server on the network, the technician will need to be provided this information including server address, port number and any required Authentication information for configuration.

vCare Technical Support Contact Information:

Phone Support: 1-800-825-5664

Email Address: kmbsvcaresupport@kmbs.konicaminolta.us

Configuration of these models is performed using the machine's Operation Panel.

Operation Panel Machine Operation Panel Overview

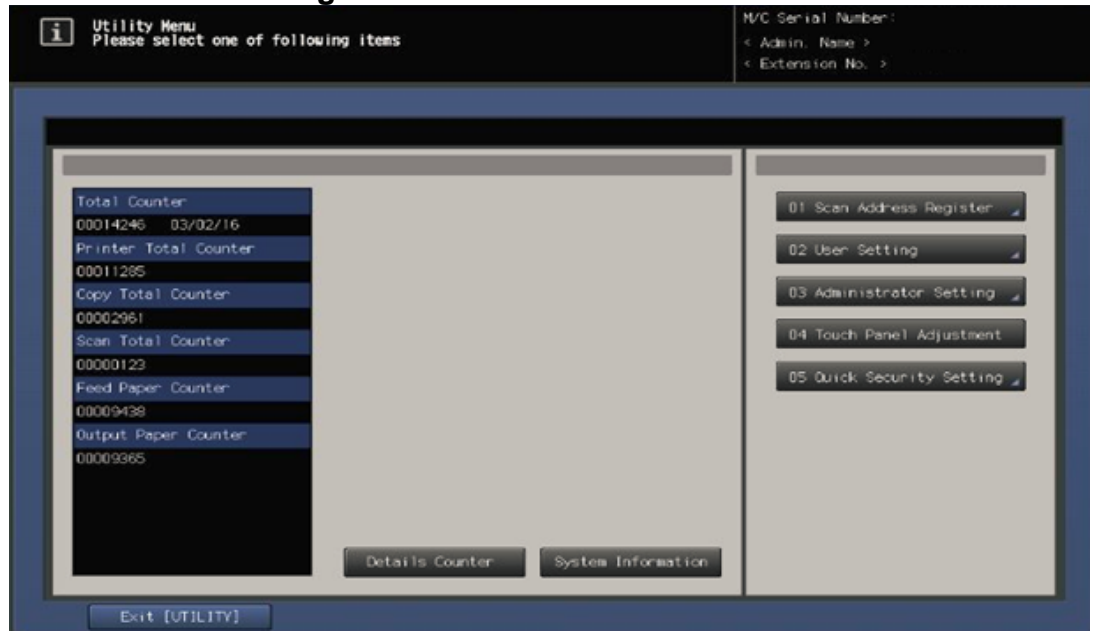


No.	Item Name	Description
1.	Touch Panel	Touch portion of Operation Panel.
2.	[Utility/Counter] button	Accesses the Utility/Counter Menu.
3.	Number Pad	The physical Number Pad.
4.	[Access] button	The Sub Menu.
5.	[Stop] button	Stop Operation button.
4.	[Start] button	Start Operation button.


Date & Time Settings must be entered in 24-hour format for Konica Minolta products.

Date & Time Settings must be entered in 24-hour format for Konica Minolta products.


Administrator Mode Configuration Administrator Settings



Accessing Administrator Mode

No.	Step	Step description
1.	Press the  button.	Access the Utility Menu.
2.	Press the [Administrator Setting] button and enter the Administrator Mode Password.	Access Administrator Mode.

Configuring Date/Time Settings

No.	Step	Step description
1.	Press the [System Setting] button.	Access the System Settings Menu.
2.	Press the [Date/Time Setting] button.	Access the Date/Time Settings.
3.	Enter Date, Time (24-hour format) and Time Zone. Press the  button for each, and then press the [OK] button.	Set the Date, Time and Time Zone.

Configuring Power Save Setting



No.	Step	Step description
1.	Press the [System Setting] button.	Access the System Settings Menu.
2.	Press the [Power Save] button, press the [ERP Setting] button, press the [Do Not Switch] button, and then press the [OK] button.	Access the Power Save>ERP Setting Menu, disable ERP Setting (European Power Save Setting).

Machine NIC TCP/IP Settings are accessed through the Administrator Mode under NIC Settings>TCP/IP Settings>IPv4 Settings.

Administrator Mode Configuration Administrator Settings



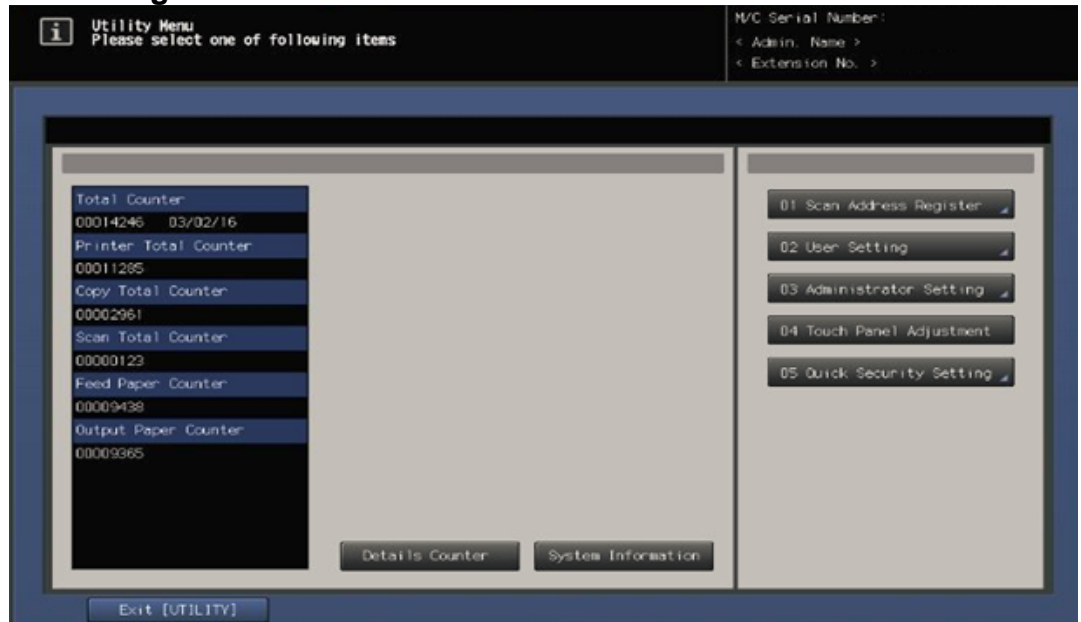
Accessing Machine NIC TCP/IP Settings

No.	Step	Step description
1.	From Administrator Mode Menu, press the [Network Setting] button.	Access the Network Setting Menu.
2.	For HTTP configuration, press the [NIC Settings] button, press the [TCP/IP Setting] button, and then press the [IPv4 Settings] button.	Access the Network Cart Settings>IPv4 Settings Menu.
3.	Configure the NIC TCP/IP settings as required and then press the  button.	Enter the current TCP/IP settings for the network card.
4.	Press the  button.	Return to the Network Settings Menu.

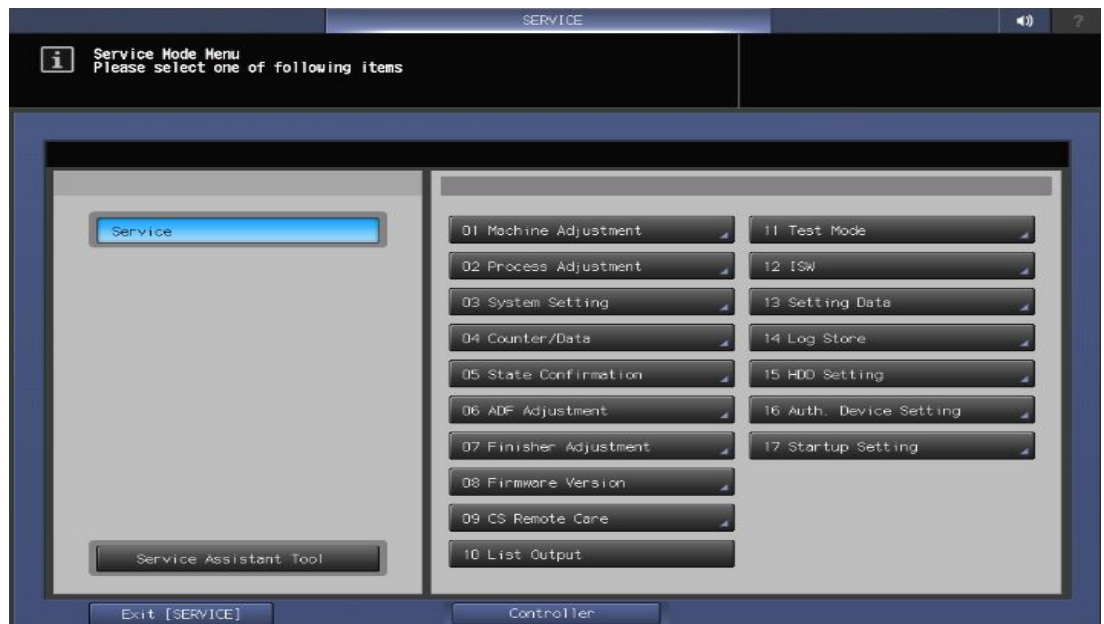
Service Mode Configuration

Software Dipswitch Settings and CS Remote Care Settings are accessed through the Service Mode.

Service Mode Settings Accessing Service Mode



No.	Step	Step description
1.	From the "Ready to Copy" Menu, press the  button. Next, press  , 0, 0,  , 0, 1.	Enter Tech Rep/Service Mode.



Service Mode Configuration

Setup Date Business Setting should be updated when configuring the unit to connect to vCare.

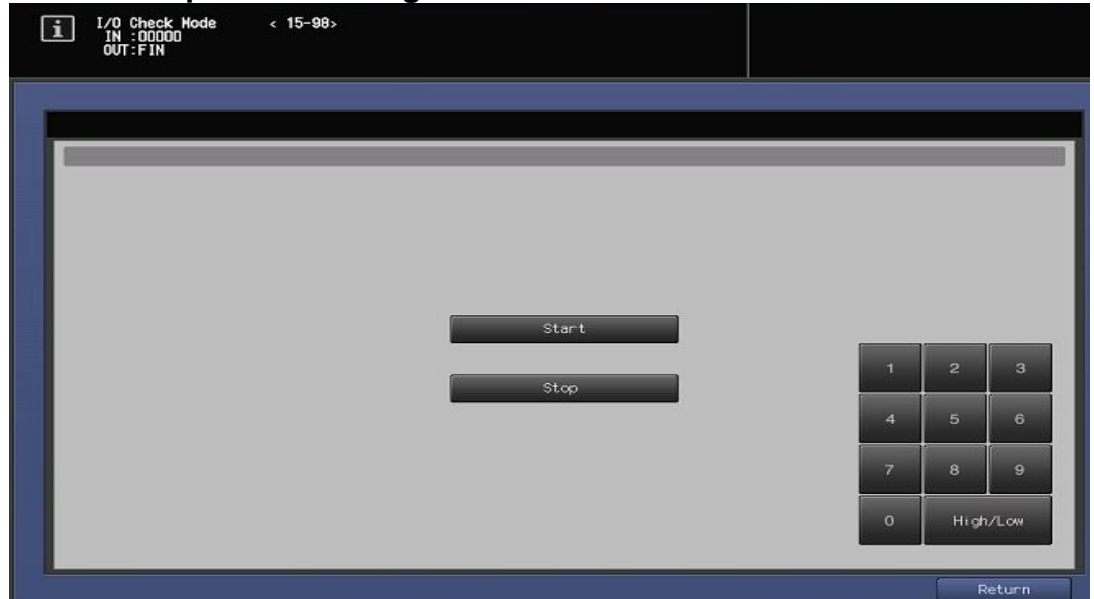
Service Mode Settings Setup Date Business Setting

No.	Step	Step description
1.	In Service Mode, press the [System Setting] button and then press the [Setup Date/Business Setting] menu.	Access the Setup Date/Business Setting Menu.
2.	Select the Type of Business appropriate radio button for the type of business for the machine's location.	Select the Type of Business.
3.	Press the [New Date] button. Change the date to the current date by pressing the [Set] button for each entry, and then press the [OK] button.	Set the New Date to the current date (MM/DD/YY) and then return to the System Setting Menu.

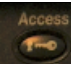


The first steps after setting Software Dipswitch 03-6 to "On" initializes CSRC Memory.

Service Mode Settings

Software Dipswitch Settings & I/O Check Mode

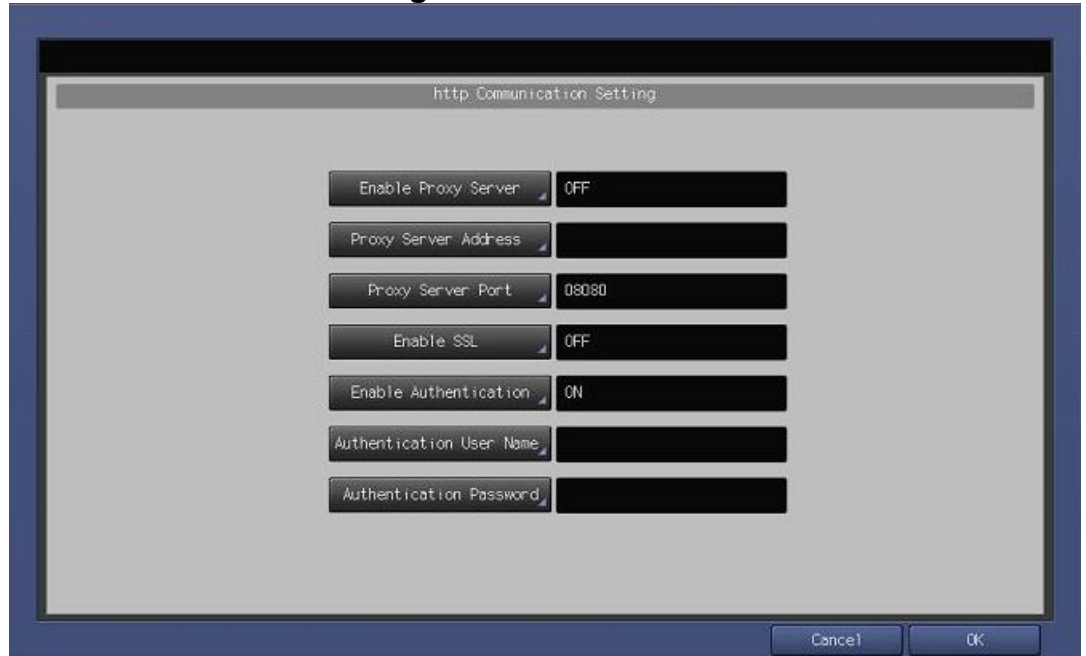


Software Dipswitch Settings & I/O Check

No.	Step	Step description
1.	From the System Setting Menu, press the [Software DIPSW Setting] button.	Access the Software Dipswitch Setting menu.
2.	Change Software Dipswitch 03-6 to [ON(1)] .	Change Software DipSW 03-6 to the "On" position to perform CSRC memory initialization.
3.	Press the [Return] button, press the [Service] button, press the [State Confirmation] button, and then press the [I/O Check Mode] button.	Access the I/O Check Mode Menu.
4.	Type "15", press the  button, Type "98" and then press the  button. The display panel should show  if successful.	Perform the I/O Check. If failed, proceed to troubleshoot . If successful, proceed to the next step.
5.	Press the [Return] button, press the [Close] button, press the [Service] button, press the [System Setting] button, and then press the [Software DipSW Setting] button.	Access the Software Dipswitch Setting menu.
6.	Change Software Dipswitch 15-5 to [ON(1)] , press the [Return] button, press the [Close] button twice, Press the [Exit] button twice, and then cycle the power.	Change Software DipSW 15-5 to the "On" position to enable CSRC Communication for the engine.

If HTTP communication on the customer's network must go through a Proxy Server, the settings are configured in the Administrator Mode.

CS Remote Care HTTP Configuration Administrator Mode Settings

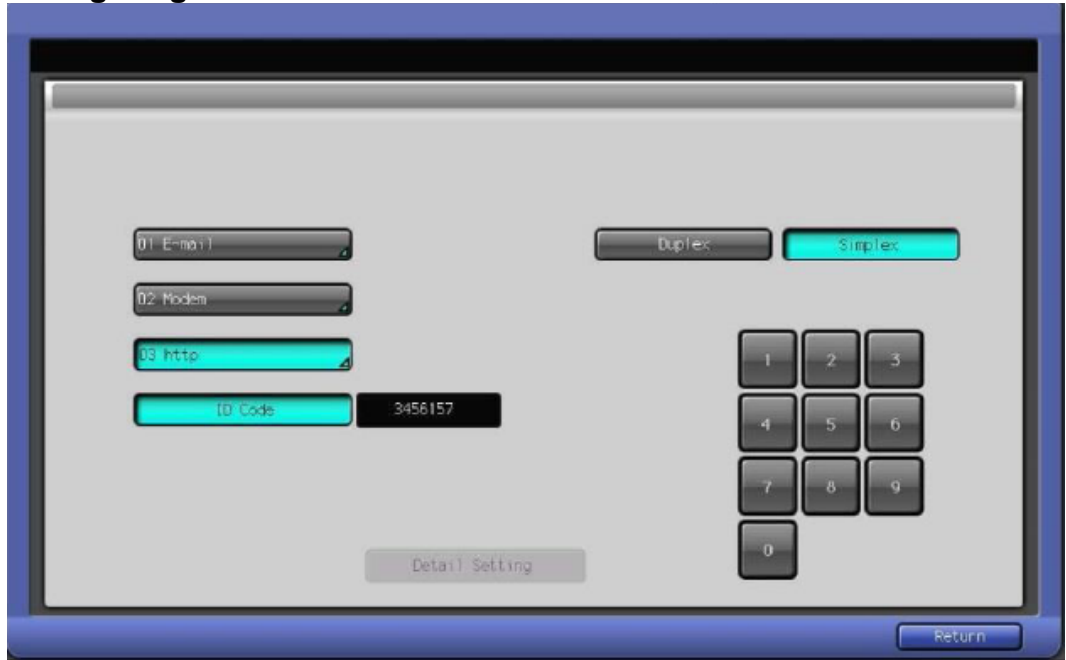


HTTP Communication Settings

No.	Step	Step description
1.	Access the Administrator Setting Menu.	Access the Administrator Setting Menu.
2.	Press the [Network Setting] button, and then press the [HTTP Communication Setting] button.	Access the Network Setting>HTTP Communication Setting Menu.
3.	If the customer's network requires Proxy Server settings to be entered for successful communication to the vCare System, obtain the settings, press the [Enable Proxy Server] button, select [ON] and then proceed to enter the Proxy Server Settings and Authentication (if required).	If required, Enable Proxy Server and enter the customer's Proxy Server settings. Skip this step if it is not required.
4.	Press the [Enable SSL] button and select [OFF] .	This selection is not required for connection to vCare and will trigger a failed connection.
5.	Press the [Enable Authentication] button, select [ON] , and then enter the Authentication User Name and Authentication Password provided by vCare Technical Support. When completed, press the [OK] button.	Turn on Authentication, enter the authentication settings, and then return to the "Ready to Copy" Menu.

HTTP Communication to the vCare Server is always Simplex.

CS Remote Care HTTP Configuration Configuring CS Remote Care



Accessing CS Remote Care

No.	Step	Step description
1.	From the Ready to Copy screen, access Service Mode, press the [CS Remote Care] button from the Left side menu, and then press the [CS Remote Care] button from the right side menu.	Access Service Mode>CS Remote Care.
2.	Press the [HTTP] button and then the [Simplex] button.	Select HTTP and Simplex options.
3.	Press the [ID] code button, enter the Service Engineer ID number, press the [ID Code] button again, and then press the [Detail Setting] button.	Access the Detail Setting Menu.
4.	Press the [RAM Clear] button, press the [Execute] button, and then press the [Return] button.	Perform RAM Clear and then return to the CS Remote Care Menu.
5.	Repeat Steps 1-3.	Repeat the steps to choose HTTP, Simplex, and to log in to CS Remote Care Detail Settings.

The Center ID is the vCare ComServer ID Number for the registration of the machine in the vCare System and must be entered using capital letters.

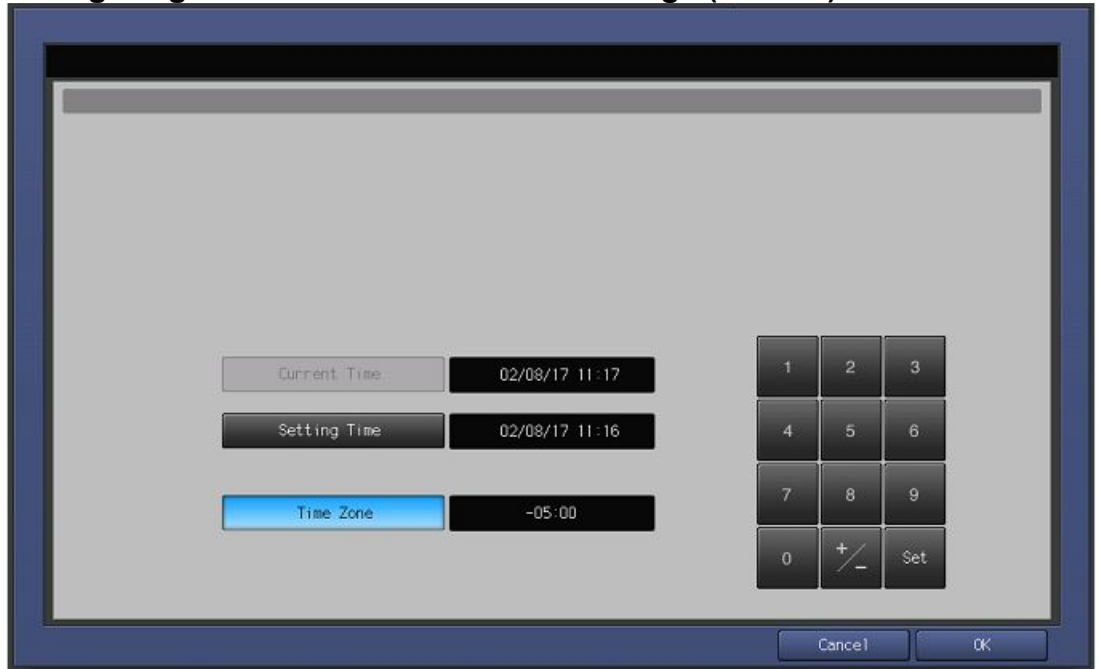
CS Remote Care HTTP Configuration Configuring CS Remote Care - Detail Settings

CS Remote Care Basic Settings

No.	Step	Step description
1.	Press the [Center ID] button and enter the vCare ComServerID number associated with the machine's vCare registration.	Enter the Center ID using capital letters for the "US".
2.	Verify that the Device ID number matches the serial number from the sticker on the physical body of the unit.	Verify the Device ID.
3.	Press the [Web Server] button and enter the Web Server URL address for the vCare HTTP Server as provided by vCare Technical Support.	Enter the Web Server Address provided by vCare Technical Support. Direct Channel Example: 10.10.10.10/webdav Dealer Channel Example: 10.10.10.10/USXXX
4.	Press the [Encryption] button and select " Not Use Encryption " and then press the [OK] button.	Set Encryption to "Not Use Encryption" and then return to the Basic Settings Menu.

CS Remote Care has a Date/Time Setting which is separate from the Administrator Setting Date/Time Setting. Both must be in sync.

CS Remote Care HTTP Configuration Configuring CS Remote Care - Detail Settings (Cont'd.)

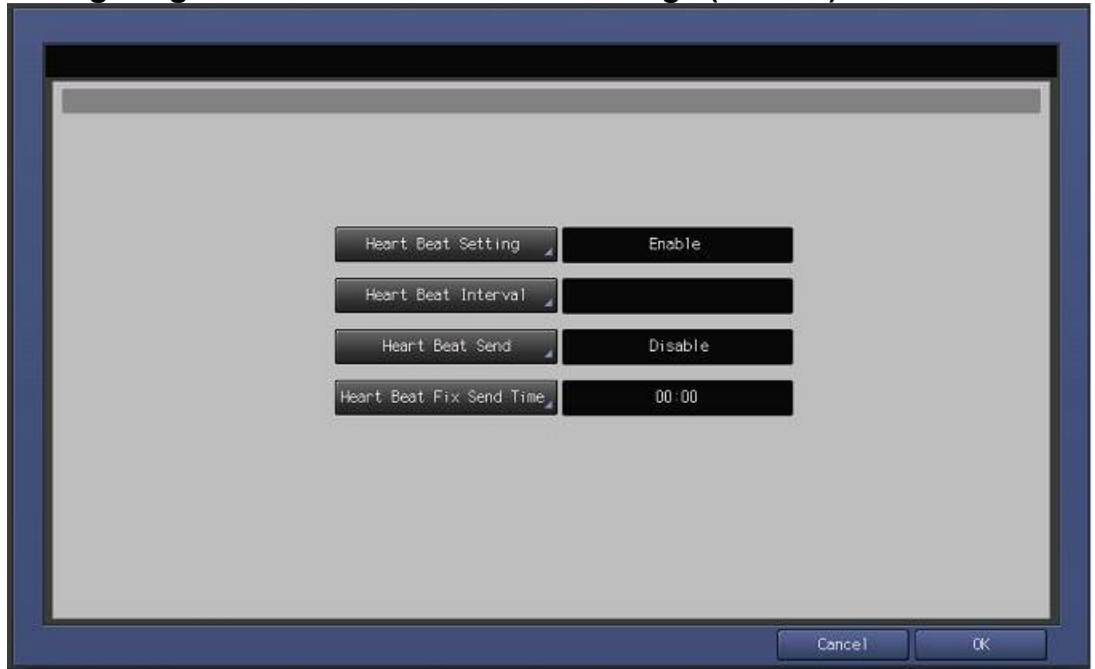


CS Remote Care Date/Time Setting

No.	Step	Step description
1.	Press the [Date/Time Setting] button. Press the [Setting Time] button and configure the current Date, Time (24-Hour Format) by pressing the [Set] button for each section.	Configure the Date and Local Time (24-Hour Format).
2.	Press the [Time Zone] button, configure the local Time Zone, press the [Set] button and then press the [OK] button.	Configure the local Time Zone and then return to the Basic Settings Menu.

The Heart Beat must be Disabled as shown in the image on this page.

CS Remote Care HTTP Configuration Configuring CS Remote Care - Detail Settings (Cont'd.)



Heart Beat Setting

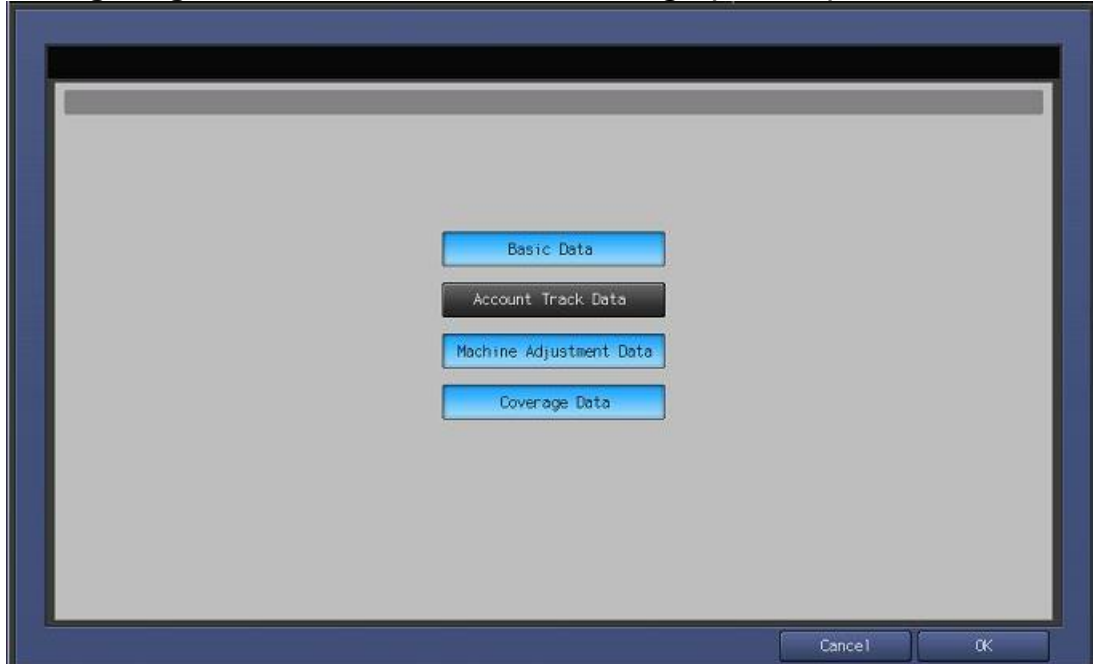
No.	Step	Step description
1.	Press the [Heart Beat Setting] button.	Access the Heart Beat Setting Menu.
2.	Press the [Heart Beat Setting] button, select the [Enable] button, press the [Heart Beat Send] button, select the [Disable] button, press the [Heart Beat Setting] button, select the [Disable] button, and then press the [OK] button.	Disable Heart Beat Send and Heart Beat Setting, and then return to the Basic Setting Menu.

Periodical Transmission Setting

No.	Step	Step description
1.	Press the [Periodical Transmission Setting] button.	Access the Periodical Transmission Setting Menu.
2.	Press the [Everyday] button, enter the current local time in 24-Hour format, press the [Set] button, and then press the [OK] button.	Configure the Periodical Transmission Settings and then return to the Basic Settings Menu.

The Collecting Data Settings must be selected as shown on this page.

CS Remote Care HTTP Configuration Configuring CS Remote Care - Detail Settings (Cont'd.)



Fixed Date/Time Setting

No.	Step	Step description
1.	Press the [Fixed Date/Time] button, configure the current Date, and current local Time in 24-Hour format, pressing the [Set] button for each section, and then press the [OK] .	Configure the Fixed Date/Time settings and then return to the Basic Settings Menu.
2.		

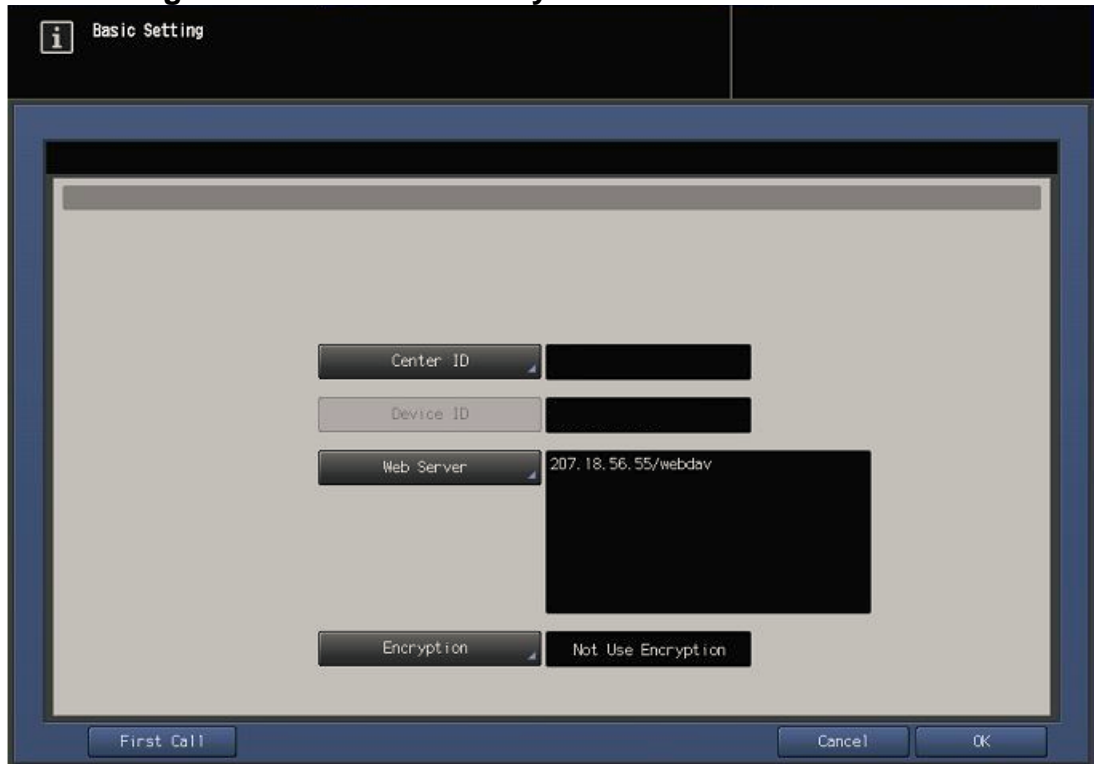
Collecting Data Setting

No.	Step	Step description
1.	Press the [Collecting Data Setting] button.	Access the Collecting Data Setting Menu.
2.	Press the buttons for [Basic Data] , [Machine Adjustment Data] , and [Coverage Data] , and then press the [OK] button.	Select the Collecting Data Setting buttons and then return to the Basic Settings Menu.

The First Call is the Initial Transmission to the vCare System.

Following the First Call, Start Maintenance and Maintenance Complete must be performed as well.

CS Remote Care HTTP Configuration Connecting the unit to the vCare System



No.	Step	Step description
1.	Press the [Basic Setting] button, and then press the [First Call] button. If there is an error code, begin troubleshooting. If not, proceed to the next steps.	Perform the First Call in the Basic Settings Menu page.
2.	Wait about a minute, then press the [ID Code] button, enter the Servicing Technician's seven digit ID code, press the [ID Code] button again. Wait another minute, and then press the [Maintenance Comp] button.	Start Maintenance and then perform Maintenance Completion.

Some configuration settings can be set using Web Utilities.

This is not intended to be a replacement for the standard configuration process.

Do not perform the Sending and Receiving Test.

CS Remote Care HTTP Configuration

Alternate CS Remote Care Settings configuration option

This is not a replacement for the entire configuration process.

No.	Step	Step description
1.	Using a web browser on a computer with a separate network connection, enter the Machine NIC IP address (IPv4) in the address bar and press [Enter] on the keyboard of the computer.	Access Web Utilities.
2.	Enter the User Name: CE and the Password: 92729272 , then press the [OK] button.	Enter the Authentication Settings and press the OK button.
3.	Press the Extension for Maintenance link and then the CSRC http Setting link.	Access the CSRC http Setting Menu.

No.	Step	Step description
1.	Follow the previously outlined steps to configure Proxy Server Settings if required.	Configure Proxy Server Settings if required.
2.	Configure the Web Server URL for the vCare HTTP Server provided by vCare Technical Support. Direct Channel example: 10.10.10.10/webdav Dealer Channel example: 10.10.10.10/USXXX	Configure the vCare HTTP Web Server URL Address.
3.	Enable Authentication, and enter the User Name and Password provided by vCare Technical Support, and then press the [Apply] button. Do not press the Sending and Receiving test button.	Enter the Authentication Settings provided by vCare Technical Support.
4.	Press the [Main Page] button until at the Main Menu and then close the web browser.	Return to the Main Menu and close the web browser.

The Server Settings can be configured to communicate directly with vCare or be pointed to send to the customer's internal e-mail server for non-standard connections.

CS Remote Care 1-Way E-Mail Configuration Administrator Mode Settings

Setting can be changed

E-mail Initial Setting

Use E-mail System: ON OFF

Time Zone: -0500

Trans(SMTP) Mail Server: [Empty]

SMTP Port Number: 00025

Trans Mail Server Timeout: 300 (030 ~ 300 sec.)

New-arrival Check Interval: 00 (01 ~ 60 min.)

Receive Mail Server: [Empty]

Receive Mail Server Type: POP3 IMAP

1 2 3

4 5 6

7 8 9 Reset

0 Set

Previous Next Test Cancel OK

E-Mail Initial Setting

No.	Step	Step description
1.	Access the Administrator Settings Menu.	Access the Administrator Settings Menu.
2.	Press the [Network Settings] Menu and then press the [E-Mail Initial Setting] Menu.	Access the E-Mail Initial Setting Menu.
3.	Press the [Use E-mail System] button and press the [On] button.	Turn on the E-Mail System.
4.	Press the [Time Zone] button, configure the local Time Zone, and press the [Set] button.	Configure the Time Zone.
5.	Press the [Trans(SMTP) Mail Server] button and enter the vCare SMTP Server IP address. For non-standard configurations, a customer's E-Mail server can be configured in this location.	Configure the SMTP Server address.
6.	Change the SMTP Port number if required.	Configure the SMTP Port number.
7.	If required , press the [Trans Mail Server Timeout] , enter the new timeout value, and then press the [Set] button.	If necessary, change the Time Out value.

E-Mail Initial Setting contains entry fields for Sending and Receiving Server Settings.

CS Remote Care 1-Way E-Mail Configuration (Cont'd). Administrator Mode Settings (Cont'd.)

Setting can be changed

E-mail Initial Setting

Use E-mail System: ON OFF

Time Zone: -0500

Trans(SMTP) Mail Server: [Empty]

SMTP Port Number: 00025

Trans Mail Server Timeout: 300 (030 ~ 300 sec.)

New-arrival Check Interval: 00 (01 ~ 60 min.)

Receive Mail Server: [Empty]

Receive Mail Server Type: POP3 IMAP

1 2 3
4 5 6
7 8 9
0

Reset
Set

Previous Next Test Cancel OK

E-Mail Initial Setting (Cont'd).

No.	Step	Step description
8.	Do not change the value for the [New-arrival Check Interval] setting.	Leave the default value for the mail check.
9.	Press the [Next] button.	Proceed to the next menu.

These fields are for the Receive Settings entries.

CS Remote Care 1-Way E-Mail Configuration (Cont'd). Administrator Mode Settings (Cont'd.)

E-Mail Initial Setting (Cont'd).

No.	Step	Step description
12.	Do not change the default value for the [POP3/IMAP Port Number] setting.	Leave the default value for the POP3/IMAP Port Number.
13.	Press the [E-mail Address for Machine] button, enter the E-Mail address provided by vCare Technical Support, and press the [OK] button. For non-standard configurations, this entry may be related to the Customer's Mail Server.	Enter a value for the Receive E-Mail Address (RX Setting E-Mail Address).
14.	Press the [Next] button.	Proceed to the next Menu.

These fields are for the SMTP Authentication Settings.

CS Remote Care 1-Way E-Mail Configuration (Cont'd). Administrator Mode Settings (Cont'd.)

The screenshot shows a software dialog box titled "E-mail Initial Setting" with a status bar at the top that reads "Setting can be changed". The dialog contains three rows of settings:

- The first row is for "SMTP Authentication", featuring a label and two buttons: "ON" (dark grey) and "OFF" (light blue).
- The second row is for "SMTP Authentication User ID", featuring a label and a dark grey input field.
- The third row is for "SMTP Authentication Password", featuring a label and a dark grey input field.

At the bottom of the dialog, there are five buttons: "Previous", "Next", "Test", "Cancel", and "OK".

E-Mail Initial Setting (Cont'd).

No.	Step	Step description
15.	Press the [ON] button for SMTP Authentication . Non-standard configurations may require settings related to the customer's e-mail server or SMTP Authentication may need to remain [Off] .	Turn on SMTP Authentication.
16.	If SMTP Authentication is [ON] , then press the [SMTP Authentication User ID] button, enter the value provided by vCare Technical Support, and then press the [OK] button. Next, press the [SMTP Authentication Password] button, enter the value provided by vCare Technical Support, press the [OK] button, and then press the [OK] button again. Non-standard configurations may require settings related to the customer's E-Mail Server or SMTP Authentication may need to remain [Off] .	Enter the Authentication values provided by vCare Technical Support and then return to the Network Setting Menu.
17.	Press the [Close] button until returning to the Ready to Copy screen.	Return to the Ready to Copy screen.

E-Mail communication with the vCare Server for these models would use E-Mail and Simplex selections.

CS Remote Care 1-Way E-Mail Configuration Configuring CS Remote Care Settings

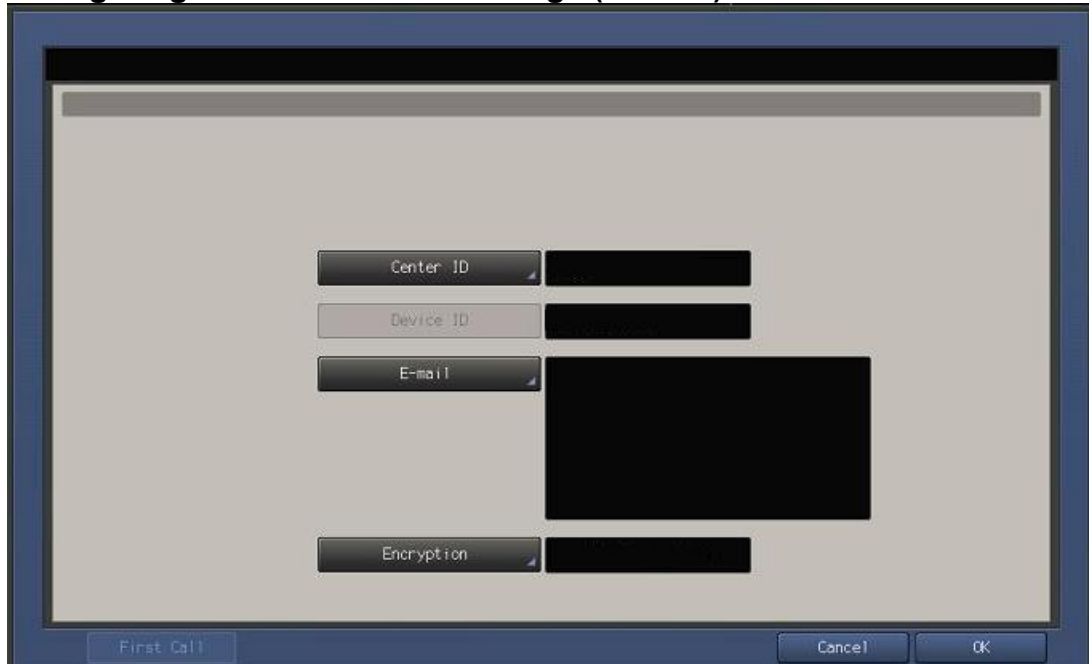


Accessing CS Remote Care

No.	Step	Step description
1.	From the "Ready to Copy" screen, access Service Mode, press the [CS Remote Care] button from the left side menu, and then press the [CS Remote Care] button from the right side menu.	Access Service Mode>CS Remote Care.
2.	Press the [E-Mail] button and then the [Simplex] button.	Select Email and Simplex options.
3.	Press the [ID] code button, enter the Service Engineer ID number, press the [ID Code] button again, and then press the [Detail Setting] button.	Access the Detail Setting Menu.
4.	Press the [RAM Clear] button, press the [Execute] button, and then press the [Return] button.	Perform RAM Clear and then return to the CS Remote Care Menu.
5.	Repeat Steps 1-3.	Repeat the steps to choose E-Mail, Simplex, and to log in to CS Remote Care Detail Settings.

The Center ID is the vCare ComServer ID Number for the registration of the machine in the vCare System and must be entered using capital letters.

CS Remote Care 1-Way E-Mail Configuration Configuring CS Remote Care Settings (Cont'd.)



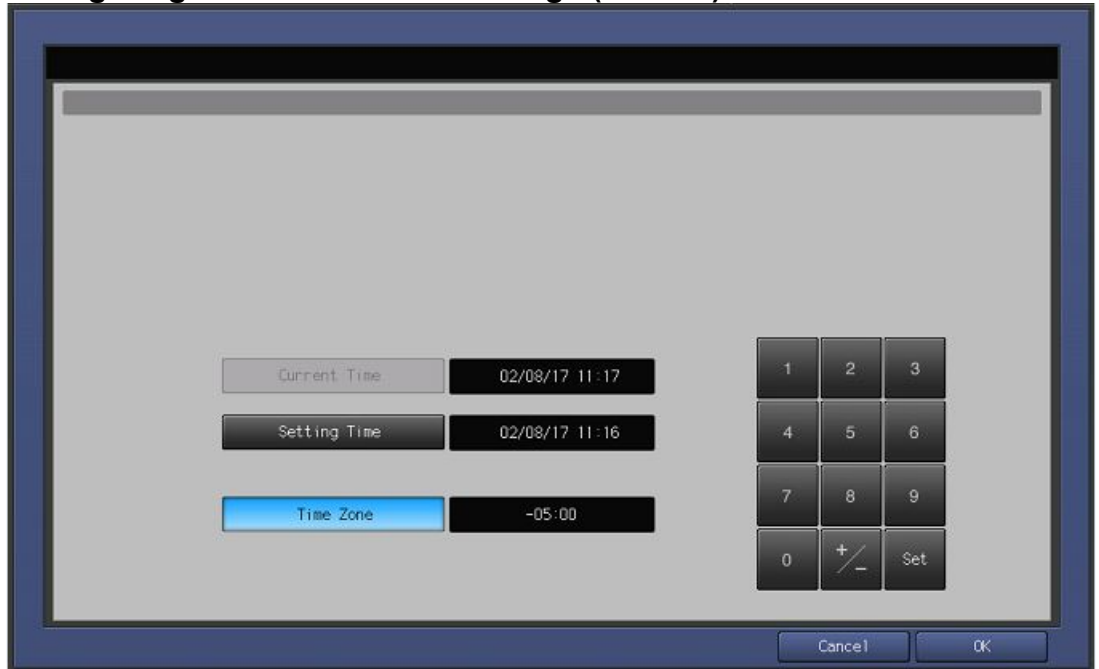
CS Remote Care Basic Settings

No.	Step	Step description
1.	Press the [Center ID] button and enter the vCare ComServerID number associated with the machine's vCare registration.	Enter the Center ID using capital letters for the "US".
2.	Verify that the Device ID number matches the serial number from the sticker on the physical body of the unit.	Verify the Device ID.
3.	Press the [E-Mail] button and enter the E-Mail address value associated with the vCare ComServer ID number. Direct Channel example: kmcorex@kmbsvcare.com For Center ID numbers US300-US3xx, the x becomes the last three numbers of the Center ID. Dealer Channel example: KMDcorex@kmbizhubvcare.com For Dealer Channel the x is one number higher than the ending of the Center ID number.	Enter the e-mail address corresponding with the vCare Comserver ID number for the vCare registration of this machine.
4.	Press the [Encryption] button, select "Not Use Encryption" and then press the [OK] button.	Set Encryption to Not Use Encryption and then return to the Basic Settings Menu.

1-Way E-Mail Configuration

CS Remote Care has a Date/Time Setting which is separate from the Administrator Setting Date/Time Setting. Both must be in sync.

CS Remote Care 1-Way E-Mail Configuration Configuring CS Remote Care Settings (Cont'd.)



CS Remote Care Date/Time Setting

No.	Step	Step description
1.	Press the [Date/Time Setting] button. Press the [Setting Time] button and configure the current Date, Time (24-Hour Format) pressing the [Set] button for each section.	Configure the Date and Local Time (24-Hour Format).
2.	Press the [Time Zone] button, configure the local Time Zone, press the [Set] button and then press the [OK] button.	Configure the local Time Zone and then return to the Basic Settings Menu.

1-Way E-Mail Configuration

The Periodical Transmission Setting will be performed at the specified time every day.

CS Remote Care 1-Way E-Mail Configuration Configuring CS Remote Care Settings (Cont'd.)



Periodical Transmission Setting

No.	Step	Step description
1.	Press the [Periodical Transmission Setting] button.	Access the Periodical Transmission Setting Menu.
2.	Press the [Everyday] button, enter the current local time in 24-Hour format, press the [Set] button, and then press the [OK] button.	Configure the Periodical Transmission Settings and then return to the Basic Settings Menu.

The Notification Settings must be configured as shown and outlined or History/Past Data for the selected Center Notification Items will not be collected.

CS Remote Care 1-Way E-Mail Configuration Configuring CS Remote Care Settings (Cont'd.)



Fixed Date/Time Setting

No.	Step	Step description
1.	Press the [Fixed Date/Time] button, configure the current Date, and current local Time in 24-Hour format, pressing the [Set] button for each section, and then press the [OK] .	Configure the Fixed Date/Time settings and then return to the Basic Settings Menu.
2.		

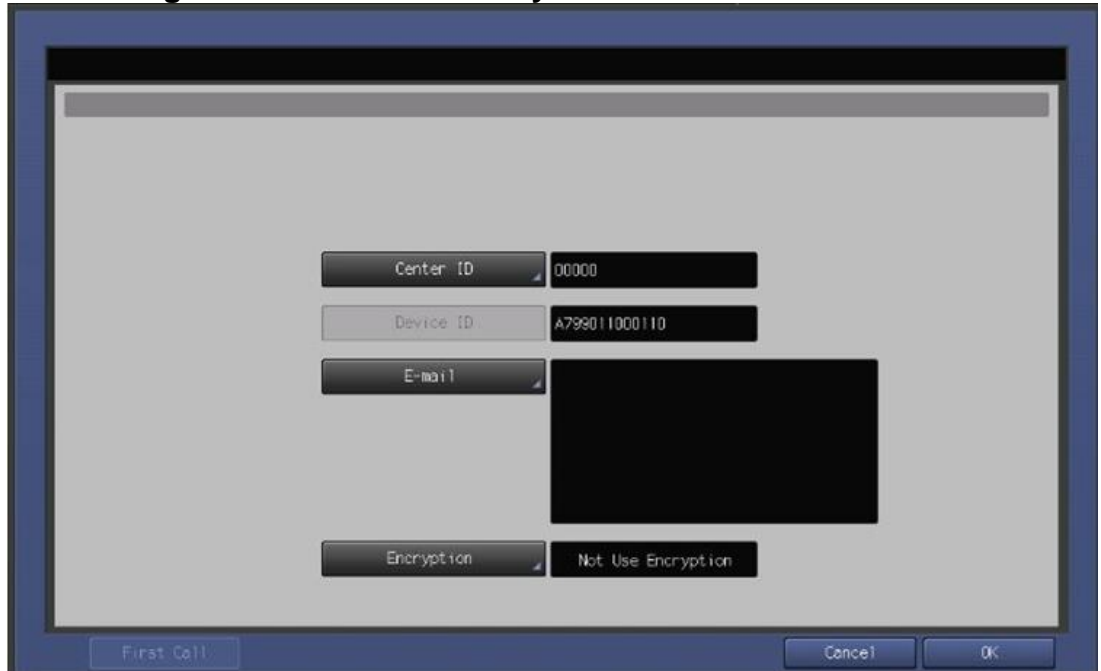
Collecting Data Setting

No.	Step	Step description
1.	Press the [Collecting Data Setting] button.	Access the Collecting Data Setting Menu.
2.	Press the buttons for [Basic Data] , [Machine Adjustment Data] , and [Coverage Data] , and then press the [OK] button.	Select the Collecting Data Setting buttons and then return to the Basic Settings Menu.

The First Call is the first connection to the vCare System.

If successful, Start Maintenance and Maintenance Complete must be performed.

CS Remote Care 1-Way E-Mail Configuration Connecting the unit to the vCare System



Connecting the unit to the vCare System

No.	Step	Step description
1.	From the CS Remote Care Main Menu, press the [Basic Setting] button.	Access the Basic Setting Menu.
2.	Press the [First Call] button from the lower left side of the screen.	Perform the First Call to the vCare System.
3.	If the panel displays an error code, proceed to troubleshoot. If the panel returns to the CS Remote Care Setting Menu and displays "Finished Normally", proceed to the next step.	Proceed to the next step or begin troubleshooting.
4.	Wait about one minute, press the [ID Code] button, enter the Service Engineer's seven-digit ID number, and then press the [ID Code] button again.	Start Maintenance.
5.	Wait about one minute and then press the [Maintenance Comp] button.	Complete Maintenance, and return to Service Mode.
6.	Press the [Close] button until the panel displays the Ready to Copy screen.	Return to Ready to Copy.

1-Way E-Mail Configuration

Some configuration settings can be set using Web Utilities.

This is not intended to be a replacement for the standard configuration process.

Do not perform the Sending and Receiving Test.

CS Remote Care 1-Way E-Mail Configuration

Alternate CS Remote Care Settings configuration option

This is not a replacement for the entire configuration process.



No.	Step	Step description
1.	Using a web browser on a computer with a separate network connection, enter the Machine NIC IP address (IPv4) in the address bar and press [Enter] on the keyboard of the computer.	Access Web Utilities.
2.	Enter the User Name: CE and the Password: 92729272 , then press the [OK] button.	Enter the Authentication Settings and press the OK button.
3.	Press the Extension for Maintenance link and then the E-Mail Initial Setting link.	Access the CSRC http Setting Menu.

1-Way E-Mail Configuration

The screens to follow allow entry for all settings with exception to Software Dipswitch settings and CS Remote Care Settings.

CS Remote Care 1-Way E-Mail Configuration (Cont'd.)

Alternate CS Remote Care Settings configuration option

This is not a replacement for the entire configuration process.

E-Mail Initial Setting

(E-Mail Notification)

Enable E-Mail notification	<input checked="" type="radio"/> Yes <input type="radio"/> No
Time difference	-500 (Minimum: -1200, Maximum: 1200)
Sending mail (SMTP) server	<input type="checkbox"/> Enable SSL (Maximum: 128 Characters)
SMTP port number	<input checked="" type="radio"/> Enable default(SMTP:25,SMTPS:465) <input type="radio"/> Custom (Minimum: 0,Maximum: 65535)
Sending mail (SMTP) server Time out	5 minute 0 second (Minimum: 30 seconds, Maximum: 5 minutes)
Interval between fetching mails	1 minute 0 second (Minimum: 1 minute, Maximum: 60 minutes)
Receiving mail server	<input type="checkbox"/> Enable SSL (Maximum: 128 Characters)
Kind of mail spool	<input checked="" type="radio"/> POP3 <input type="radio"/> IMAP
POP3(IMAP) port number	<input checked="" type="radio"/> Enable default(POP3:110,IMAP:143,POP3S:995,IMAPS:993) <input type="radio"/> Custom (Minimum: 0,Maximum: 65535)
User name on the server	(Maximum: 64 Characters)
Password	(Maximum: 64 Characters)
E-Mail Address of this copy machine	relay@kmbvscare.com (Maximum: 128 Characters)
Nickname	(Maximum: 20 Characters)
CE Password	in E-Mail Subject (Maximum: 20 Characters)
Also Notice to the administrator	<input type="radio"/> no <input type="radio"/> only illegal mails <input type="radio"/> all mails
Administrator E-Mail address	(Maximum: 64 Characters)
Announce delay time in reply mail	<input type="radio"/> Yes <input checked="" type="radio"/> No
Enable POP(IMAP) before SMTP	<input type="radio"/> Yes <input checked="" type="radio"/> No
Retry polling when the machine is busy	<input type="radio"/> Yes <input checked="" type="radio"/> No
Enable SMTP Authentication	<input type="radio"/> Yes <input checked="" type="radio"/> No User name (Maximum: 64 Characters) Password (Maximum: 64 Characters)

Apply Reset

Sending and Receiving test Sending test mail to Copier and Receiving

Extension for maintenance

Main Page

No.	Step	Step description
1.	For Enable E-Mail Notification , press the Yes radio button.	Enable E-Mail Notification.
2.	Configure the Time difference to be the local Time Zone.	Configure the Time Zone.
3.	Configure the Sending mail (SMTP) server with the vCare E-Mail Server IP address provided by the vCare Administrator. For non-standard configurations, this entry may be related to the Customer's Mail Server.	Configure the Receiving Mail Server address.
4.	Change the SMTP Port number if required.	Configure the SMTP Port number.
5.	If required, configure the Sending mail (SMTP) server Time out with a timeout value.	If necessary, change the Time Out value.
6.	Change the value for [Interval between fetching mails.] to 0 .	Change the Mail Check to 0.

1-Way E-Mail Configuration

These settings are generally provided by vCare Technical Support.

For non-standard configurations, they may be associated with a customer's mail server.

CS Remote Care 1-Way E-Mail Configuration (Cont'd.)

Alternate CS Remote Care Settings configuration option

This is not a replacement for the entire configuration process.

E-Mail Initial Setting

(E-Mail Notification)

Enable E-Mail notification	<input checked="" type="radio"/> Yes <input type="radio"/> No
Time difference	-500 (Minimum: -1200, Maximum: 1200)
Sending mail (SMTP) server	<input type="text"/> (Maximum: 128 Characters)
SMTP port number	<input type="checkbox"/> Enable SSL <input checked="" type="radio"/> Enable default(SMTP:25,SMTPS:465) <input type="radio"/> Custom <input type="text"/> (Minimum: 0,Maximum: 65535)
Sending mail (SMTP) server Time out	5 minute 0 second (Minimum: 30 seconds, Maximum: 5 minutes)
Interval between fetching mails	1 minute 0 second (Minimum: 1 minute, Maximum: 60 minutes)
Receiving mail server	<input type="text"/> (Maximum: 128 Characters)
Kind of mail spool	<input type="checkbox"/> Enable SSL <input checked="" type="radio"/> POP3 <input type="radio"/> IMAP
POP3(IMAP) port number	<input checked="" type="radio"/> Enable default(POP3:110,IMAP:143,POP3S:995,IMAPS:993) <input type="radio"/> Custom <input type="text"/> (Minimum: 0,Maximum: 65535)
User name on the server	<input type="text"/> (Maximum: 64 Characters)
Password	<input type="text"/> (Maximum: 64 Characters)
E-Mail Address of this copy machine	relay@kmbvscare.com (Maximum: 128 Characters)
Nickname	<input type="text"/> (Maximum: 20 Characters)
CE Password	<input type="text"/> in E-Mail Subject (Maximum: 20 Characters)
Also Notice to the administrator	<input type="radio"/> no <input type="radio"/> only illegal mails <input type="radio"/> all mails
Administrator E-Mail address	<input type="text"/> (Maximum: 64 Characters)
Announce delay time in reply mail	<input type="radio"/> Yes <input checked="" type="radio"/> No
Enable POP(IMAP) before SMTP	<input type="radio"/> Yes <input checked="" type="radio"/> No
Retry polling when the machine is busy	<input type="radio"/> Yes <input checked="" type="radio"/> No
Enable SMTP Authentication	<input type="radio"/> Yes <input checked="" type="radio"/> No User name <input type="text"/> Password <input type="text"/> (Maximum: 64 Characters)

Apply Reset

Sending and Receiving test Sending test mail to Copier and Receiving

Extension for maintenance

Main Page

No.	Step	Step description
7.	For the Receiving mail server , enter the server address provided by vCare Technical Support. For non-standard connections, this may be related to the customer's e-mail server.	Enter the Server Address value provided by vCare technical Support for the Receiving mail server.
8.	Do not change the Kind of mail spool value.	Leave the default value for the Kind of Mail Spool (POP3).
9.	Do not change the value for POP3(IMAP) port number .	Leave the default value for the POP3(IMAP) port number.
10.	For the User name on the server enter the receive e-mail address provided by vCare Technical Support. For non-standard connections, this may be related to the customer's e-mail server.	Enter the vCare Email Address provided by vCare Technical Support.
11.	For the Password , enter the receiving mail box password provided by vCare Technical Support. For non-standard connections, this may be related to the customer's e-mail server.	Enter the vCare mail box password provided by vCare Technical Support.

1-Way E-Mail Configuration

These settings are generally provided by vCare Technical Support.

For non-standard configurations, they may be associated with a customer's mail server.

CS Remote Care 1-Way E-Mail Configuration (Cont'd.)

Alternate CS Remote Care Settings configuration option

This is not a replacement for the entire configuration process.

E-Mail Initial Setting

(E-Mail Notification)

Enable E-Mail notification	<input checked="" type="radio"/> Yes <input type="radio"/> No
Time difference	-500 (Minimum: -1200, Maximum: 1200)
Sending mail (SMTP) server	(Maximum: 128 Characters)
SMTP port number	<input type="checkbox"/> Enable default(SMTP:25,SMTPS:465) <input checked="" type="checkbox"/> Custom (Minimum: 0,Maximum: 65535)
Sending mail (SMTP) server Time out	5 minute 0 second (Minimum: 30 seconds, Maximum: 5 minutes)
Interval between fetching mails	1 minute 0 second (Minimum: 1 minute, Maximum: 60 minutes)
Receiving mail server	(Maximum: 128 Characters)
Kind of mail spool	<input type="checkbox"/> Enable SSL <input checked="" type="radio"/> POP3 <input type="radio"/> IMAP
POP3(IMAP) port number	<input checked="" type="radio"/> Enable default(POP3:110,IMAP:143,POP3S:995,IMAPS:993) <input type="checkbox"/> Custom (Minimum: 0,Maximum: 65535)
User name on the server	(Maximum: 64 Characters)
Password	(Maximum: 64 Characters)
E-Mail Address of this copy machine	relay@kmbvscare.com (Maximum: 128 Characters)
Nickname	(Maximum: 20 Characters)
CE Password	In E-Mail Subject (Maximum: 20 Characters)
Also Notice to the administrator	<input type="radio"/> no <input checked="" type="radio"/> only illegal mails <input type="radio"/> all mails
Administrator E-Mail address	(Maximum: 64 Characters)
Announce delay time in reply mail	<input type="radio"/> Yes <input checked="" type="radio"/> No
Enable POP(IMAP) before SMTP	<input type="radio"/> Yes <input checked="" type="radio"/> No
Retry polling when the machine is busy	<input type="radio"/> Yes <input checked="" type="radio"/> No
Enable SMTP Authentication	<input type="radio"/> Yes <input checked="" type="radio"/> No
User name	Password (Maximum: 64 Characters)

Apply Reset

Sending and Receiving test Sending test mail to Copier and Receiving

Extension for maintenance

Main Page

No.	Step	Step description
12.	For the E-Mail Address of this copy machine , enter the receive E-Mail address provided by vCare Technical Support. For non-standard connections, this may be related to the customer's e-mail server.	Enter the vCare Email Address provided by vCare Technical Support (Receive Setting).
13.	For Nickname , enter "CE".	Enter the Nickname.
14.	For CE Password , enter "92729272".	Enter the CE Password.
15.	For Also Notice to the administrator , select "No."	Set Also Notice to the administrator to "No."
16.	For Administrator E-Mail address , enter the e-mail address provided by vCare Technical Support. For non-standard connections, this may be related to the customer's E-Mail server.	Enter the vCare Email Address provided by vCare Technical Support (SMTP Setting).
17.	For Announce delay time in reply mail , select No .	Set Announce delay time in reply mail to no.
18.	For Enable POP(IMAP) before SMTP , select No .	Set Enable POP(IMAP) before SMTP to no.
19.	For Retry polling when the machine is busy , select No .	Set Retry polling when the machine is busy to no.

1-Way E-Mail Configuration

These settings are generally provided by vCare Technical Support.

For non-standard configurations, they may be associated with a customer's mail server.

CS Remote Care 1-Way E-Mail Configuration (Cont'd.)

Alternate CS Remote Care Settings configuration option

This is not a replacement for the entire configuration process.

E-Mail Initial Setting

(E-Mail Notification)

Enable E-Mail notification	<input checked="" type="radio"/> Yes <input type="radio"/> No
Time difference	-500 (Minimum: -1200, Maximum: 1200)
Sending mail (SMTP) server	(Maximum: 128 Characters)
SMTP port number	<input type="checkbox"/> Enable default(SMTP:25,SMTPS:465) <input checked="" type="radio"/> Custom (Minimum: 0,Maximum: 65535)
Sending mail (SMTP) server Time out	5 minute 0 second (Minimum: 30 seconds, Maximum: 5 minutes)
Interval between fetching mails	1 minute 0 second (Minimum: 1 minute, Maximum: 60 minutes)
Receiving mail server	(Maximum: 128 Characters)
Kind of mail spool	<input type="checkbox"/> Enable SSL <input checked="" type="radio"/> POP3 <input type="radio"/> IMAP
POP3(IMAP) port number	<input checked="" type="radio"/> Enable default(POP3:110,IMAP:143,POP3S:995,IMAPS:993) <input type="radio"/> Custom (Minimum: 0,Maximum: 65535)
User name on the server	(Maximum: 64 Characters)
Password	(Maximum: 64 Characters)
E-Mail Address of this copy machine	relay@kmbstvcare.com (Maximum: 128 Characters)
Nickname	(Maximum: 20 Characters)
CE Password	in E-Mail Subject (Maximum: 20 Characters)
Also Notice to the administrator	<input type="radio"/> no <input type="radio"/> only illegal mails <input type="radio"/> all mails
Administrator E-Mail address	(Maximum: 64 Characters)
Announce delay time in reply mail	<input type="radio"/> Yes <input checked="" type="radio"/> No
Enable POP(IMAP) before SMTP	<input type="radio"/> Yes <input checked="" type="radio"/> No
Retry polling when the machine is busy	<input type="radio"/> Yes <input checked="" type="radio"/> No
Enable SMTP Authentication	<input checked="" type="radio"/> Yes <input type="radio"/> No User name (Maximum: 64 Characters) Password (Maximum: 64 Characters)

Apply Reset

Sending and Receiving test Sending test mail to Copier and Receiving

Extension for maintenance

Main Page

No.	Step	Step description
1.	To Enable SMTP Authentication , select “ Yes. ”	Turn on SMTP Authentication.
2.	If SMTP Authentication is set to “ Yes, ” then enter the values provided by vCare Technical Support for User name and Password, press the [Apply] button, and then press the [Main Page] button until the first menu is displayed and close the Web Browser. Do no press the [Sending and Receiving test] button. Non-standard configurations may require settings related to the customer's e-mail server or SMTP Authentication may need to be disabled by selecting No for Enable SMTP Authentication.	Enter the Authentication values provided by vCare Technical Support, press Apply, use the [Main Page] button to return to the first menu, and close the web browser.
3.	Reboot the machine and return to Service Mode on the machine.	Reboot the machine and return to Service Mode on the machine.

Transmission error codes can be found under the Troubleshooting section of the Field Service Manuals for these models.

They can be viewed or downloaded from the www.mykonicaminolta.com website.

Troubleshooting

Observing the SMTP Log

-----Sending Part (SMTP LOG)-----

== No.1==

To:
Subject:
Date: Thu, 30 Apr 2009 11:26:44
Kind: Test Mail
Result: Succeed

== No.2==

To: host@csrc.konicaminolta.com
Subject: AAB_LAB01_AOU0011000024_RQZRZRZR
Date: Thu, 30 Apr 2009 11:21:23
Kind: CSRC Mail
Result: Succeed

== No.3==

To: host@csrc.konicaminolta.com
Subject: AAB_LAB01_AOU0011000024_RQZRZRZR
Date: Thu, 30 Apr 2009 11:21:09
Kind: CSRC Mail
Result: Succeed

== No.4==

To: host@csrc.konicaminolta.com
Subject: AAB_LAB01_AOU0011000024_USZRZRZR
Date: Thu, 30 Apr 2009 11:19:23
Kind: CSRC Mail
Result: Succeed

Observe the HTTP Communication results listed in the “SMTP LOG” and have the results on hand when calling vCare technical support.

A
Communication
Log can be
saved to a USB
Storage Device.

Troubleshooting (Cont'd).

Saving the Communication Log on to a USB Storage Device




No.	Step	Step description
1.	Access Service Mode from the Ready to Copy screen.	Access Service Mode.
2.	Press the [List Output] button. If the "Communication Log List" button does not appear, in [Service Mode] > select [System Setting] > [Software DIPSW Setting] and set [30-1] to On(1).	Access the List Output Menu.
3.	Press the [Output All to USB] button and press the [OK] button.	Perform the Output All to USB function.
4.	Press the [OK] button when the "Batch Output to USB Memory is complete" message is displayed.	Complete the function.
5.	Remove the USB Device and then exit Service Mode. The save file will include all management list information. The file name should start with "listprint."	Complete the process. The file opens in Notepad or an equivalent application. Perform find using the following string: "Remote diagnostic report" to access log.

A Communication Log can also be printed by following these instructions.

Troubleshooting (Cont'd).

Printing a vCare Communication Log



No.	Step	Step description
1.	Access Service Mode from the Ready to Copy screen.	Access Service Mode.
2.	Press the [List Output] button. If the "Communication Log List" button does not appear, in [Service Mode] > select [System Setting] > [Software DIPSW Setting] and set [30-1] to On(1).	Access the List Output Menu.
3.	Press the [Communication Log List] button, press the [Print Mode] button, and then press the  button.	Print out the Communication Log List.
4.	Press the [Exit PrintMode] button and then press the [Close] button until the Ready to Copy screen is displayed.	Exit Print Mode and return to the Ready to Copy screen.